



Information Station—Truly Outstanding Friendly Service

"Excuse me, where can we taste great food?" "Excuse me, what are the specialty products of this region?" If you have any question during your journey in Taiwan, come to the Information Station and say "Excuse me~" You may be pleasantly surprised!

In order to help independent travelers have their question answered via friendly, Taiwanese-style service, the Taiwan Tourism Bureau has collaborated with friendly stores and service providers throughout Taiwan to establish "Information Stations" that help visitors in Taiwan.

You can spot an "Information Station" by its yellow, round "Information Station" sign with black letters. Besides wall maps and friendly travel information services, the station also has a Wi-Fi hotspots and QR codes that guide visitors to a variety of cloud-based travel services.

Information Stations add "local characteristics" and "hospitality" to your journey. The aim is to create moving experiences that will encourage visitors to come back time after time, so that they can continue to enjoy the beauty of Taiwan and the warm hospitality of her people.

Come on, don't be shy; everyone is invited to make inquiries at the "Information Station"!

24HR toll-free travel information hotline: 0800-011765



借問站 友善服務真正讚

「借問一下，哪裡有好吃的？」、「借問一下，這裡的特產是什麼？」。在旅行臺灣的旅途中有任何問題，來到借問站輕鬆的「借問一下……」，就會有讓人讚不絕口的驚喜！

為了以「歡喜相借問」的臺式熱情服務，協助自由行旅客解決疑難雜症，交通部觀光局特別與全臺友善店家與服務單位合作設立「借問站」，讓遊客輕鬆暢遊臺灣。

來到「借問站」的門口，您會看見黃底黑字的圓形「借問站」招牌，借問站裡除了有地圖資訊看板與友善的旅遊諮詢服務外，並設有WiFi熱點與QR code引導至雲端提供各項旅遊服務。

「借問站」讓您的旅遊過程融入了「在地」與「人情味」，就是想為旅人創造一遊再遊、一「遊」未盡的感動體驗，可看見臺灣之美，也感受熱情臺灣。請大家「免拍謝」，快去借問一下！

24小時免付費旅遊諮詢服務熱線 ☎ 0800-011765



人生地不熟·一問解千愁

New Information Stations—Enjoy friendly experiences

Taiwan
THE HEART OF ASIA
交通部觀光署
Tourism Administration, MOTC

周邊地區旅遊諮詢服務

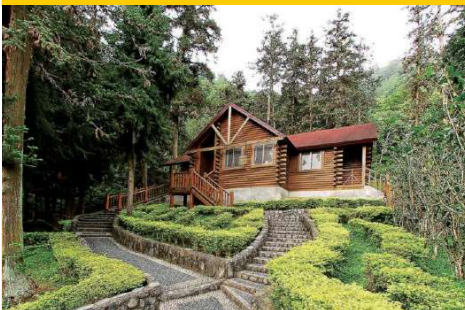


桃竹苗i-center旅遊服務體系		
獅山遊客中心	新竹縣峨眉鄉七星村六寮60-8號	03-5809296
南庄遊客中心	苗栗縣南庄鄉東村大同路43號	037-824570
Taoyuan, Hsinchu, Miaoli i-center Travel Service Network		
Lion's Head Mountain Visitor Center	No.60-8, Liuliao, Emei Township, Hsinchu County	03-5809296
Nanzhuang Visitor Center	No.43, Datong Rd., Nanzhuang Township, Miaoli County	037-824570
中彰投i-center旅遊服務體系		
向山遊客中心	南投縣魚池鄉中山路599號	049-2341256
伊達邵遊客中心	南投縣魚池鄉文化街127號	049-2850289
車埕遊客中心	南投縣水里鄉車埕村民權巷111號	049-2774981
埔里遊客中心	南投縣埔里鎮中山路四段191號	049-2916060
Taichung, Changhua, Nantou i-center Travel Service System		
Xiangshan Visitor Center	No. 599, Zhongshan Rd., Yuchi Township, Nantou County	049-2341256
ItaThao Visitor Center	No. 127, Wenhua St., Sun Moon Vll., Yuchi Township, Nantou County	049-2850289
Checheng Visitor Center	No.111 Minquan Lane, Checheng Vll., Shuili Township, Nantou County	049-2774981
Puli Visitor Center	No. 191, Sec. 4, Zhongshan Rd., Puli Township, Nantou County	049-2916060

24小時免付費旅遊諮詢服務熱線 ☎ 0800-011765



借問站資訊



日月潭青年活動中心

日月潭青年活動中心海拔800公尺，面積近9公頃，位於依山傍水的日月潭國家風景區裡。中心外觀素雅，偌大多元的空間，搭配周邊湖光山色的景致，總讓人感到愜意自然。無論是觀光旅遊或是會議訓練，都能讓到訪的旅客沉浸在南投好山好水之餘，盡情享受度假的閒適氣氛。

Sun Moon Lake Youth Activity Center

The Sun Moon Lake Youth Activity Center, situated at an altitude of 800 meters and covering a land of 9 hectares, is at the Sun Moon Lake National Scenic Area. Surrounded by the mountains and water and close to numerous popular tourist spots, such as Sun Moon Lake Ropeway and Ita Thao Old Street, Sun Moon Lake Youth Activity Center provides a relaxing space for visitors to immerse themselves in the great natural sceneries of Nantou whether for traveling and sightseeing, or conferencing and training.



台灣好行・台灣觀巴

台灣好行 輕鬆出遊好方式

「台灣好行（景點接駁公車）」服務將旅客從景點附近的臺鐵、高鐵等交通場站接送至主要觀光景點，是想自行規劃行程又不想開車或跟團的旅客，節能減碳與輕鬆出遊的好方式。

Taiwan Tourist Shuttle – The Easy Way to Travel

The "Taiwan Tourist Shuttle" is a bus service designed exclusively to help travelers, both local and foreign, get around Taiwan with the utmost convenience and economy. From Taiwan Railways train stations and High Speed Rail stations, the shuttle buses take travelers to nearby tourist attractions, covering all of the island's main scenic destinations. The Taiwan Tourist Shuttle is the easiest and most convenient way to travel for people who are without their own transportation and are not with a tour group. It not only allows them to plan their itineraries flexibly, but also resonates with the new tourism trend of energy conservation and carbon reduction.



台灣觀巴 深度體驗悠遊臺灣之美

「台灣觀巴」集合全臺灣各大景點，規劃多種精采套裝行程，悠遊臺灣特色風光、體驗在地文化，發現臺灣無限魅力！「台灣觀巴」可直接至飯店、機場及車站接送旅客並提供全程交通、導覽解說、旅遊保險及低成行人數等貼心服務，讓您輕鬆體驗低碳小旅行。

Taiwan Tour Bus—In depth Appreciation of Taiwan's Splendors

The Taiwan Tour Bus covers major tourist destinations in Taiwan with a variety of dazzling travel itineraries, allowing you to travel the beautiful island of Formosa with ease and discover her infinite appeal! The Taiwan Tour Bus offers convenient, comfortable and friendly guided tours to a variety of top tourist destinations, with pick-up and drop-off at your hotel, airport, or rail station. Other thoughtful services such as travel insurance allow you to enjoy your sightseeing journey effortlessly and comfortably.



台灣觀巴
Taiwan Tour Bus

日月潭國家風景區管理處
Sun Moon Lake National Scenic Area Headquarters



廣告



日月潭青年活動中心

地址：南投縣魚池鄉日月村中正路101號
電話：049-2850070
官方網站：http://sun.cyh.org.tw/

救國團日月潭青年活動中心提供可容納400人的大禮堂、小禮堂、會議室、中低空探索設施、營火場、餐廳、咖啡館及四人套房、小木屋、歐式獨棟別墅等設施，接待對象包含參加公益、教育、服務、學習、健康及文化等相關活動之人員，或持有學生、志工證明及未滿40歲之青年朋友，皆可辦理入住。

Sun Moon Lake Youth Activity Center

Address: No. 118-2 Longsheng Rd., Puli Township, Nantou 1.
Basic information of the information station
Address: No. 101, Zhongzheng Rd., Riyue Village, Yuchi Township, Nantou County
Telephone: 049-2850070
Website: http://sun.cyh.org.tw/

The Sun Moon Lake Youth Activity Center has a great hall that can hold 400 people, a small hall, conference rooms, low mid-air exploratory facilities, a campfire site, restaurants, a coffeehouse, and suites. Its target groups include any individual who are attending activities held by government agencies, schools, NGOs in relation to public welfare, education, service and training, health or culture, students with valid document of enrollment, any staff or volunteer with the document of proof issued by the China Youth Corp., and adults who are below forth years old.

鄰近資訊 Food / Accommodation / Places to go

- 九族文化村**
南投縣魚池鄉金天巷45號
049-2895361
09:30~17:00
Formosan Aboriginal Culture Village
☞ No. 45, Jintian Ln., Yuchi Township, Nantou County
☎ 049-2895361
☎ 9:30am-5:00pm
- 大竹湖步道**
南投縣魚池鄉大竹湖步道
049-2855668
09:00~17:00
Dazhuhu Trail
☞ Dazhuhu Trail, Yuchi Township, Nantou County
☎ 049-2855668
☎ 9:00am-5:00pm
- 九蛙疊像**
南投縣魚池鄉台21甲線水蛙頭步道旁
049-2850289
全天開放
Nine Frogs Stack
☞ Next to Shuiwatou Trail, Provincial Highway No. 21-A, Yuchi Township, Nantou County
☎ 049-2850289
☎ Open all day
- 水蛙頭步道**
南投縣魚池鄉水蛙頭步道
049-2850289
09:00~17:00
Shuiwatou Trail
☞ Shuiwatou Trail, Yuchi Township, Nantou County
☎ 049-2850289
☎ 9:00am-5:00pm
- 水社大山登山口**
南投縣魚池鄉水社大山登山口
049-2855668
09:00~17:00
Great Mt. Shuishe Mountain entrance
☞ Great Mt. Shuishe Mountain entrance, Yuchi Township, Nantou County
☎ 049-2855668
☎ 9:00am-5:00pm
- 水社大山步道**
南投縣魚池鄉水社大山步道
049-2855668
09:00~17:00
Great Mt. Shuishe Trail
☞ Great Mt. Shuishe Trail, Yuchi Township, Nantou County
☎ 049-2855668
☎ 9:00am-5:00pm, closed on Wednesday
- 伊達邵文物館**
南投縣魚池鄉中正路211巷1號
049-2850441
需先向校方預約
Ita Thao Museum
☞ No. 1, Ln. 211, Zhongzheng Rd., Yuchi Township, Nantou County
☎ 049-2850441
☎ With prior reservation
- 瑪蓋旦風味餐廳**
南投縣魚池鄉豐年街42號
0927-755949
09:00~19:30
週三公休
Mann Gay Dann
☞ No. 42, Fengnian St., Yuchi Township, Nantou County
☎ 0927-755949
☎ 9:00am-7:30pm, closed on Wednesday
- 日月潭纜車站**
南投縣魚池鄉中正路102號
049-2850666#9
平日10:30~16:00(售票時間10:00~15:30); 假日10:00~16:30(售票時間09:30~16:00)
Sun Moon Lake Ropeway
☞ No. 102, Zhongzheng Rd., Yuchi Township, Nantou County
☎ 049-2850666#9
☎ 10:30am-4:00pm on weekdays (ticket office-10:00am-3:30pm); 10:00am-4:30pm on holidays (ticket office-9:30-4:00pm)



- 湖悅景觀旅店**
南投縣魚池鄉義勇街113號
049-2850002
24小時營業
Hu Yue Lake View Hotel
☞ No. 113, Yiyong St., Yuchi Township, Nantou County
☎ 049-2850002
☎ 24-hour
- Tea 18 Zhaowu Black Tea**
南投縣魚池鄉德化街107號
0933-508128
Riyue Winery- Millet Wine Museum
☞ No. 107, Wenhua St., Yuchi Township, Nantou County
☎ 0933-508128
☎ 8:30am-8:00pm
- 映涵渡假飯店**
南投縣魚池鄉文化街88號
049-2850299
24小時營業
Einhan Resort
☞ No. 88, Wenhua St., Yuchi Township, Nantou County
☎ 049-2850299
☎ 24 hours
- 古早味刈包-阿薩姆夾心豆干**
南投縣魚池鄉義勇街111號
10:30~19:00
Dried Bean Curd with Sliced Pork
☞ No. 111, Yiyong St., Yuchi Township, Nantou County
☎ 10:30am-7:00pm
- 力麗哲園-日潭館**
南投縣魚池鄉水秀街7號
049-2850022
24小時營業
Lealea Garden Hotel-Sun
☞ No. 7, Shuixiu St., Yuchi Township, Nantou County
☎ 049-2850022
☎ 24-hour
- 日月茶行**
南投縣魚池鄉水秀街6-1號
049-2850138
10:00~21:00
Riyue Tea
☞ No. 6-1, Shuixiu St., Yuchi Township, Nantou County
☎ 049-2850138
☎ 10:00am-9:00pm
- 貓頭鷹工廠手沖咖啡**
南投縣魚池鄉義勇街94號
09:00~21:00
049-2850139
Owl factory hand-brewed coffee
☞ No. 94, Yiyong St., Yuchi Township, Nantou County
☎ 049-2850139
☎ 9:00am-9:00pm
- 薩司岸 飯飯雞翅**
南投縣魚池鄉義勇街22號
0982-865360
10:00~18:30
Lusian Fan Fan Chicken Wings
☞ No. 22, Yiyong St., Yuchi Township, Nantou County
☎ 0982-865360
☎ 10:00am-6:30pm
- 總統魚酥捲**
南投縣魚池鄉義勇街50號
0930-151021
11:00~19:30(週六、日11:00~2:00)
- Fried Fish Paste**
☞ No. 50, Yiyong St., Yuchi Township, Nantou County
☎ 0930-151021
☎ 11:00am-7:30pm (11:00am-2:00pm on holidays)
- 劉家總統魚羹**
南投縣魚池鄉義勇街62號
049-2850116
10:30~19:00
The Liu's President Fish Soup
☞ No. 62, Yiyong St., Yuchi Township, Nantou County
☎ 049-2850116
☎ 10:30am-7:00pm
- 育正紅茶-日月潭阿薩姆紅茶專賣店**
南投縣魚池鄉義勇街73號
049-2850258
09:00~21:30
- Yuzheng Black Tea - Sun Moon Lake Assam Black Tea Store**
☞ No. 73, Yiyong St., Yuchi Township, Nantou County
☎ 049-2850258
☎ 09:00-21:30
- 杰記山豬肉大刈包**
南投縣魚池鄉義勇街102號
049-2850032
10:00~19:30
(週六、日10:00-19:00)
Jieji Steam Bun with Pork
☞ No. 102, Yiyong St., Yuchi Township, Nantou County
☎ 049-2850032
☎ 10:00am-7:30pm
- 明月湖品味湖畔旅店**
南投縣魚池鄉水沙連街11號
049-2850501
24小時營業
Mingyuehu Hotel
☞ No. 11, Shuishalian St., Yuchi Township
☎ 049-2850501
☎ 24-hour